

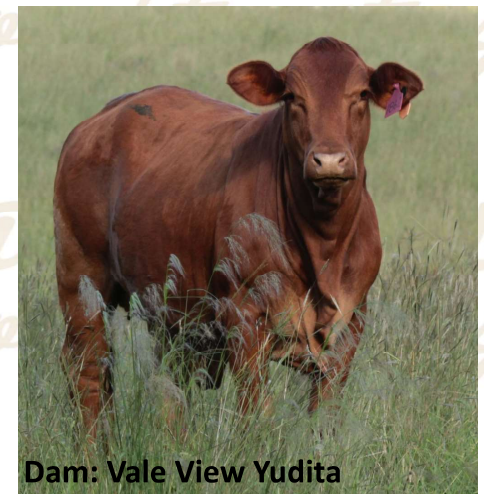
Lot 401 - Vale View Bungee 2 (P) - 21 mths

PH verified. Pompes & Pesti Tested Negative.

Lovely polled head, plenty of thickness & loose skin.

First calf for his dam, she's sired by Vale View Vagas who was an exceptionally well put together son of Rondel Korageous, unfortunately we lost him in an accident.

Sire: Glenlands Substitute sons have sold to \$13,500 & 9 daughters have avg \$5,250. He's a son of Glenlands Maranoa out of Glenlands 6696, she's also the dam of Glenlands Torpedo whose semen fetched \$700/straw earlier this year.



200 day	400 day	600 day	Scrotal
+13 59% acc	+16 61% acc	+30 61% acc	+1.8 66% acc
Dent.	Scrotal	Semen	Weight @ 10/9
0	37.5 cm	75%	750 kg
P8	Rib	EMA (cm)	IMF %
11	7	123	4.2

Less than 50% accuracy - the EBVs are preliminary. EBVs in this range will have been calculated based on very little information.
 50-74% accuracy - the EBVs are of medium accuracy. 75-90% accuracy - the EBVs are of medium-high accuracy.
 More than 90% accuracy - the EBVs are a high accuracy estimate of the animal's true breeding value.